

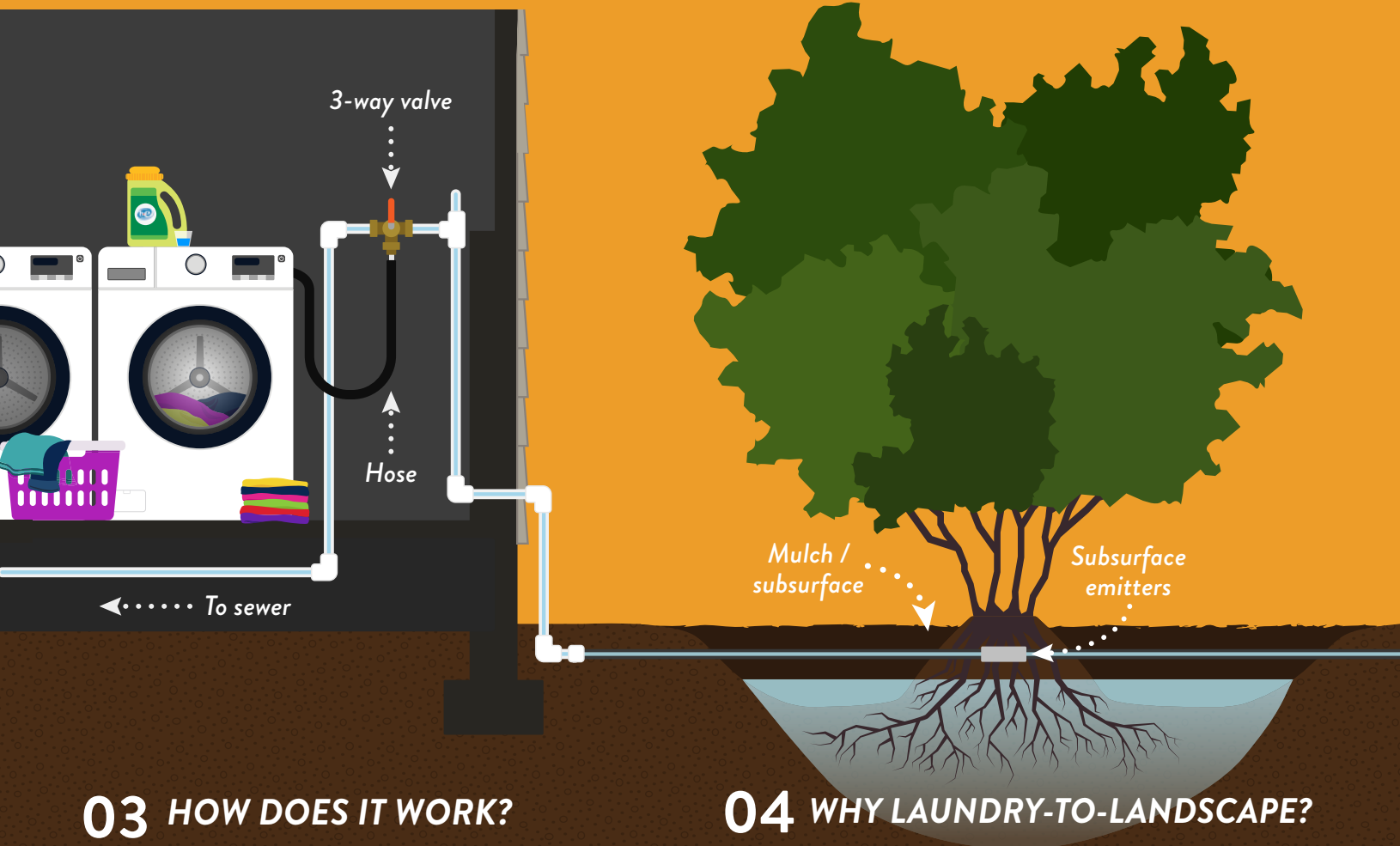
KNOW YOUR LAUNDRY-TO-LANDSCAPE

01 WHAT IS LAUNDRY-TO-LANDSCAPE?

Laundry-to-landscape systems are a relatively low-cost, easy-to-install, way to reuse **laundry discharge** to **irrigate trees and plants** instead of sending it with the rest of household wastewater through sanitary sewers to **wastewater treatment plants** for treatment and discharge.

02 WHAT IS GREYWATER?

Laundry discharge is considered **greywater**, a term for **lightly contaminated household wastewater**; this term may also refer to discharge from **showers, baths, and bathroom sinks**. Reusing greywater can **lower municipal water use, reduce household bills, and nourish vegetation**.



03 HOW DOES IT WORK?

A **washer hose** is connected to the outlet of the washing machine, whose **internal pump** pressurizes and distributes the greywater outside. The water travels through **subsurface pipes** and is diverted through drilled **outlets** or adjustable **3-way valves** into **mulch basins**, which surround and irrigate the vegetation.

04 WHY LAUNDRY-TO-LANDSCAPE?

Pros

- + Relatively **low cost**
- + Can **install without a permit** in California
- + **Minimal maintenance**
- + Can **distribute greywater uphill** & across **long distances**
- + Easy to **route laundry water to sewer** if necessary

Cons

- + Poorly designed systems can **add strain on the washer pump** and shorten its lifespan
- + **Uneven** irrigation
- + Lack of filtration may cause **clogging**
- + May need to acquire **custom parts**